

● Item Number

UP60 X - 30 N 1

Lead of Ball Screw **1:** 1 mm **2:** 2 mm

N: Without Cover **C:** With Cover

Travel Range (mm)

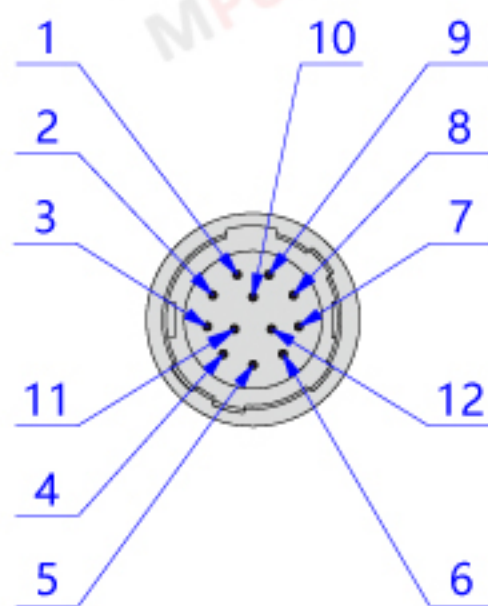
Moving **X:** X Axis **XY:** X & Y Axes
Direction **Z:** Z Axis **XYZ:** X, Y & Z Axes

Platform **40:** 40 x 40
Size (mm) **60:** 60 x 60

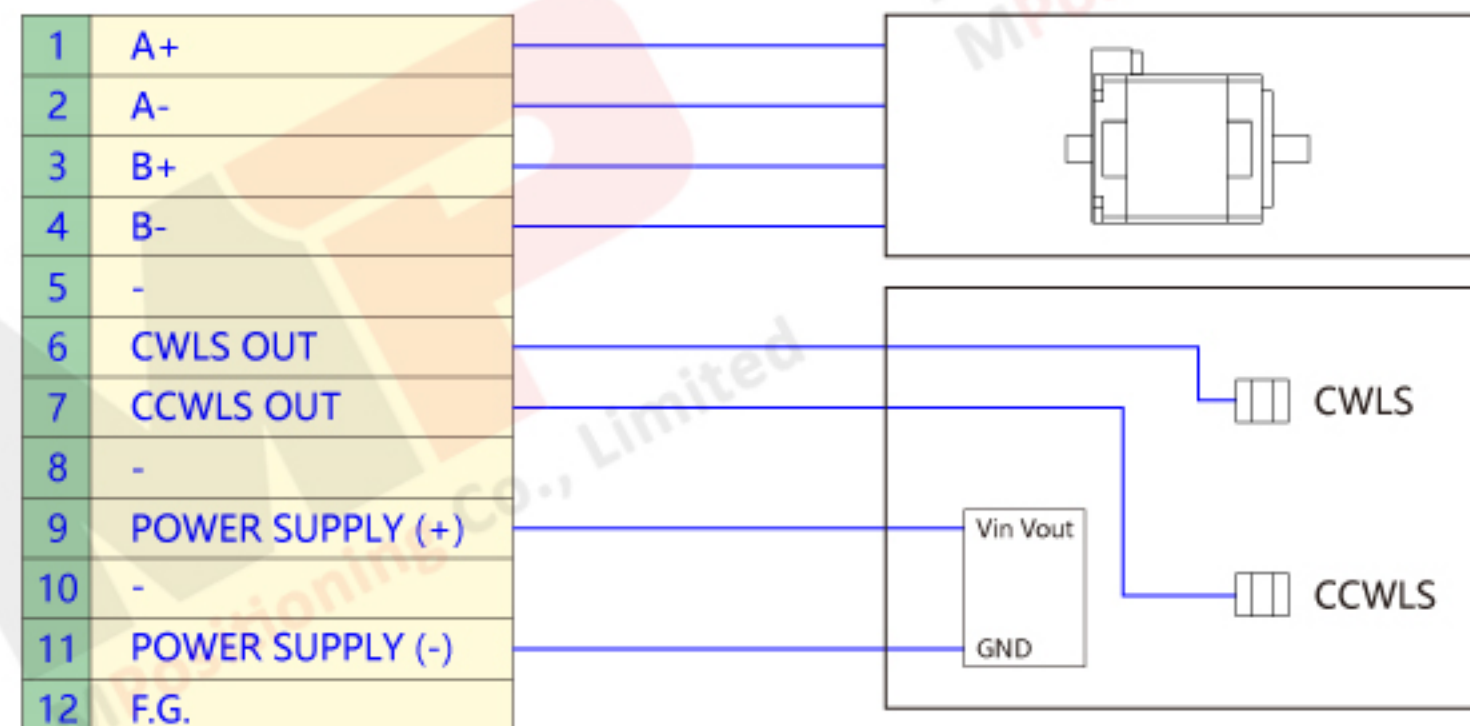
● Specifications (Ask for inquiring if you need cables.)

Type	Motorized Linear Stage	Drive Mechanism	Ball Screw	Resolution	5 (µm)
Material	Stainless Steel (SUS440C)	Positioning Accuracy	15 (µm)	Load Capacity	10.0 (kgf)
Finish	Electroless Nickel Plating	Motor	2-Phases Stepper Motor (Options: 5-Phases Stepper Motor or AC Servo Motor)		
Sensors	Limit Switch	Bearing Construction	Double-Row, Gothic-Arch Ball Bearing Slides		

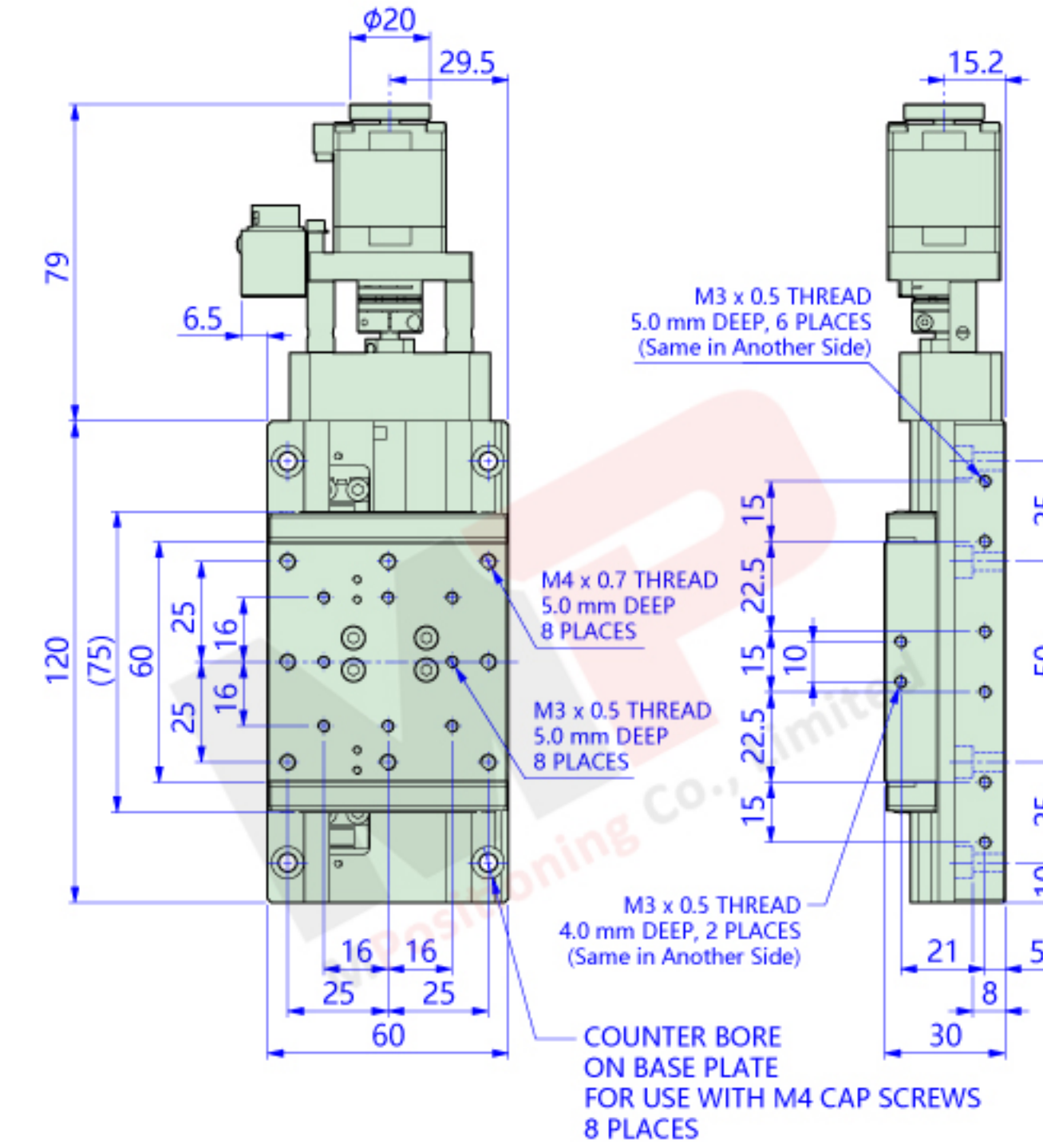
● Connector



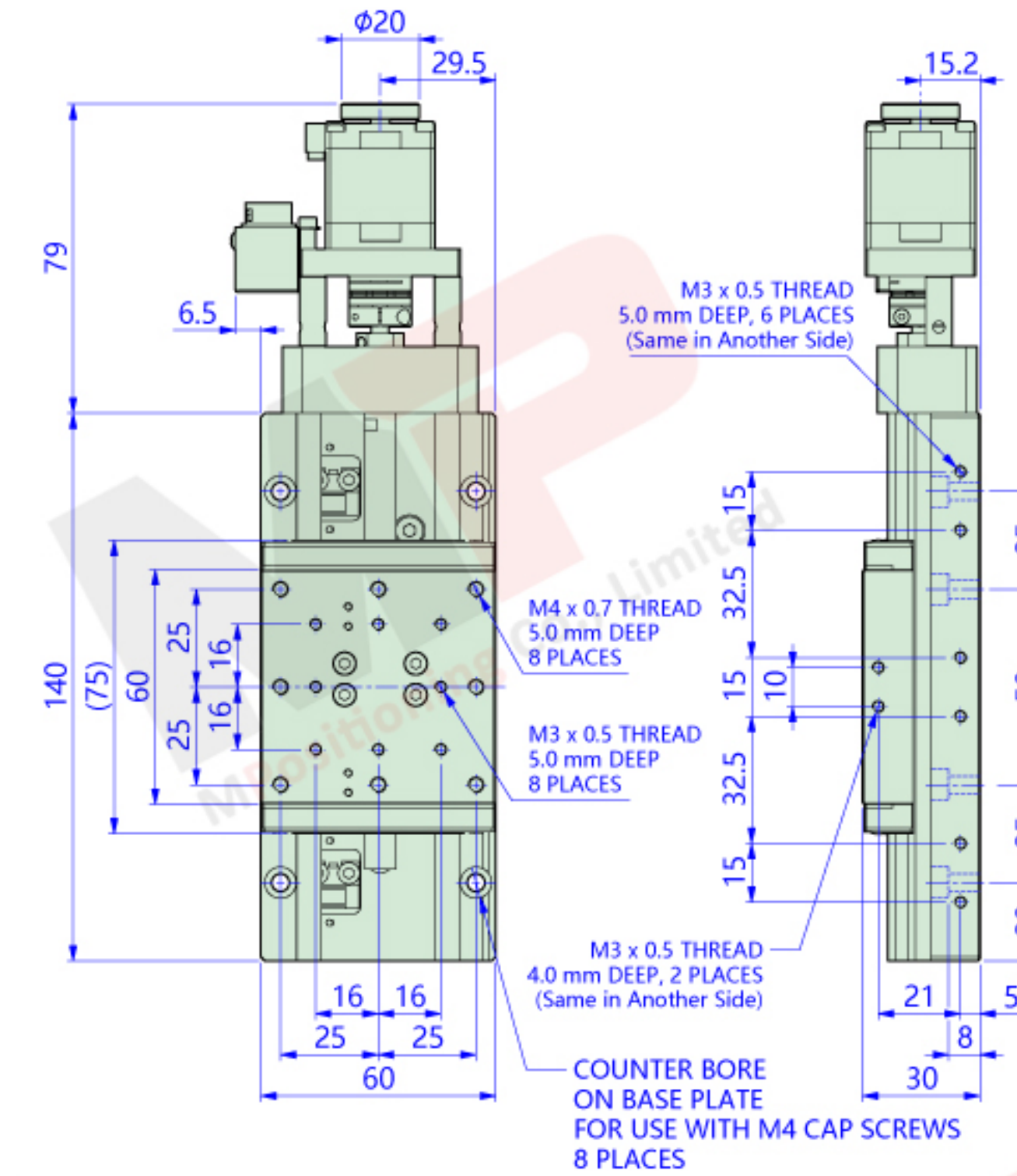
● Wiring



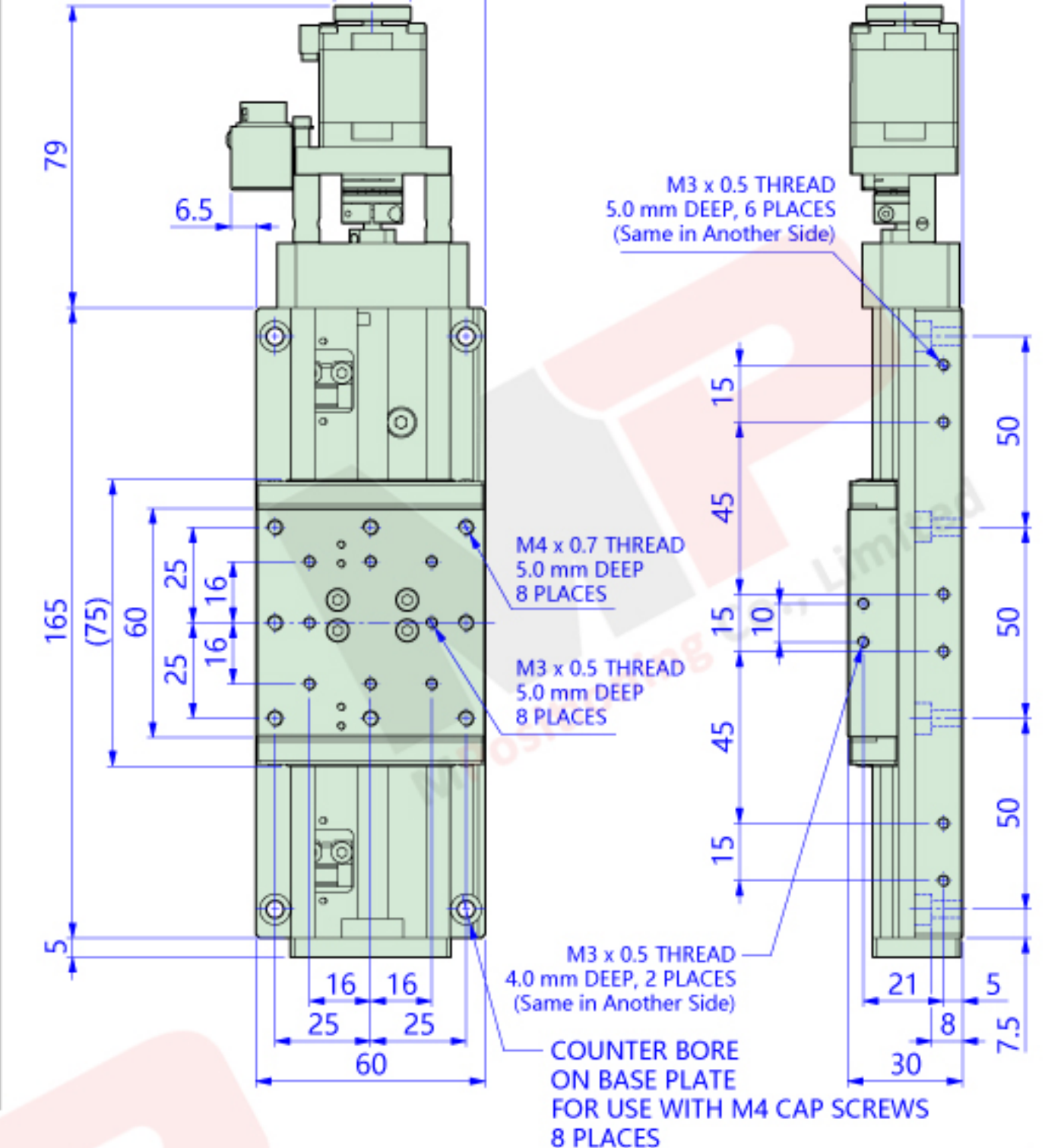
UP60X-30N1



UP60X-50N1

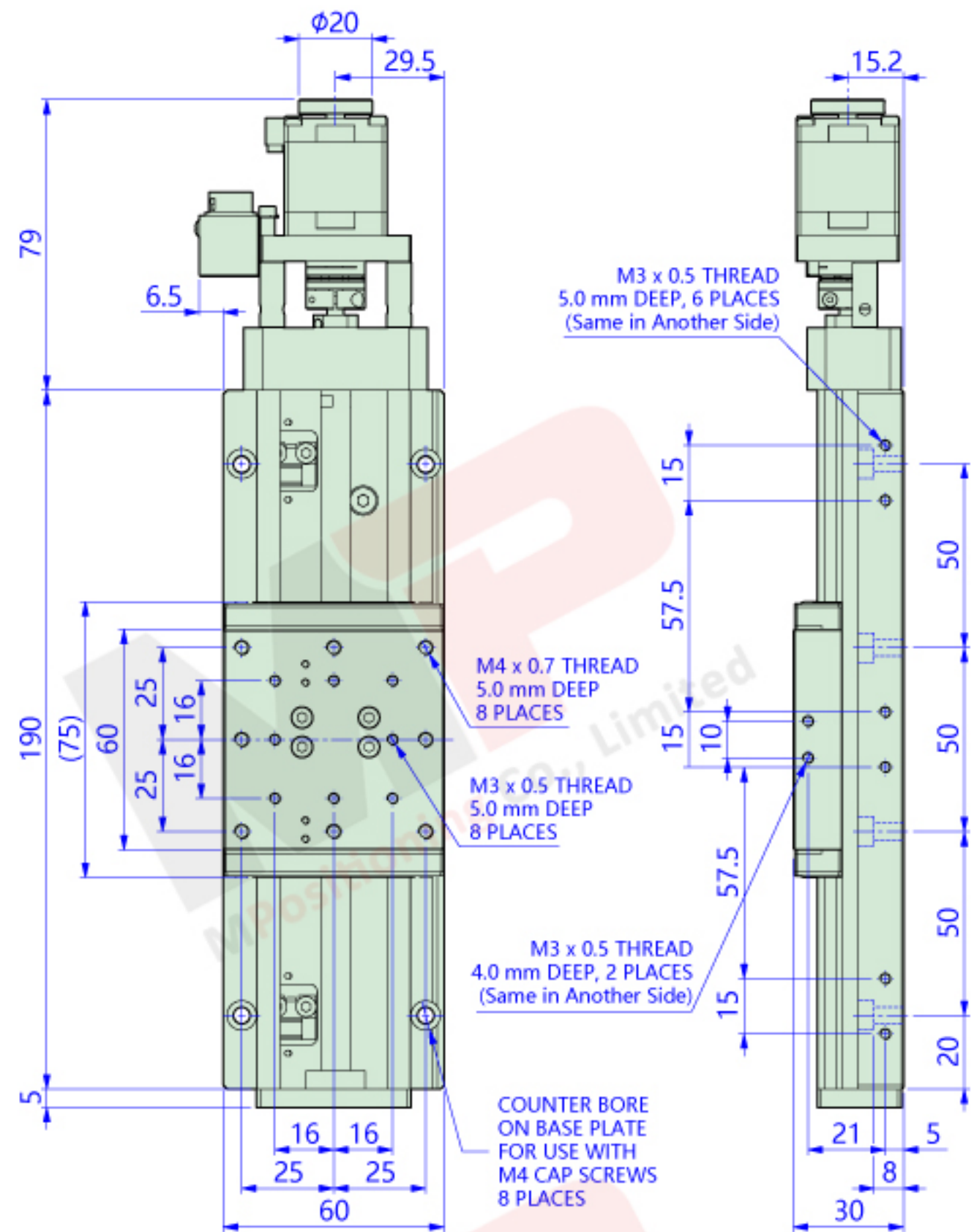


UP60X-75N1

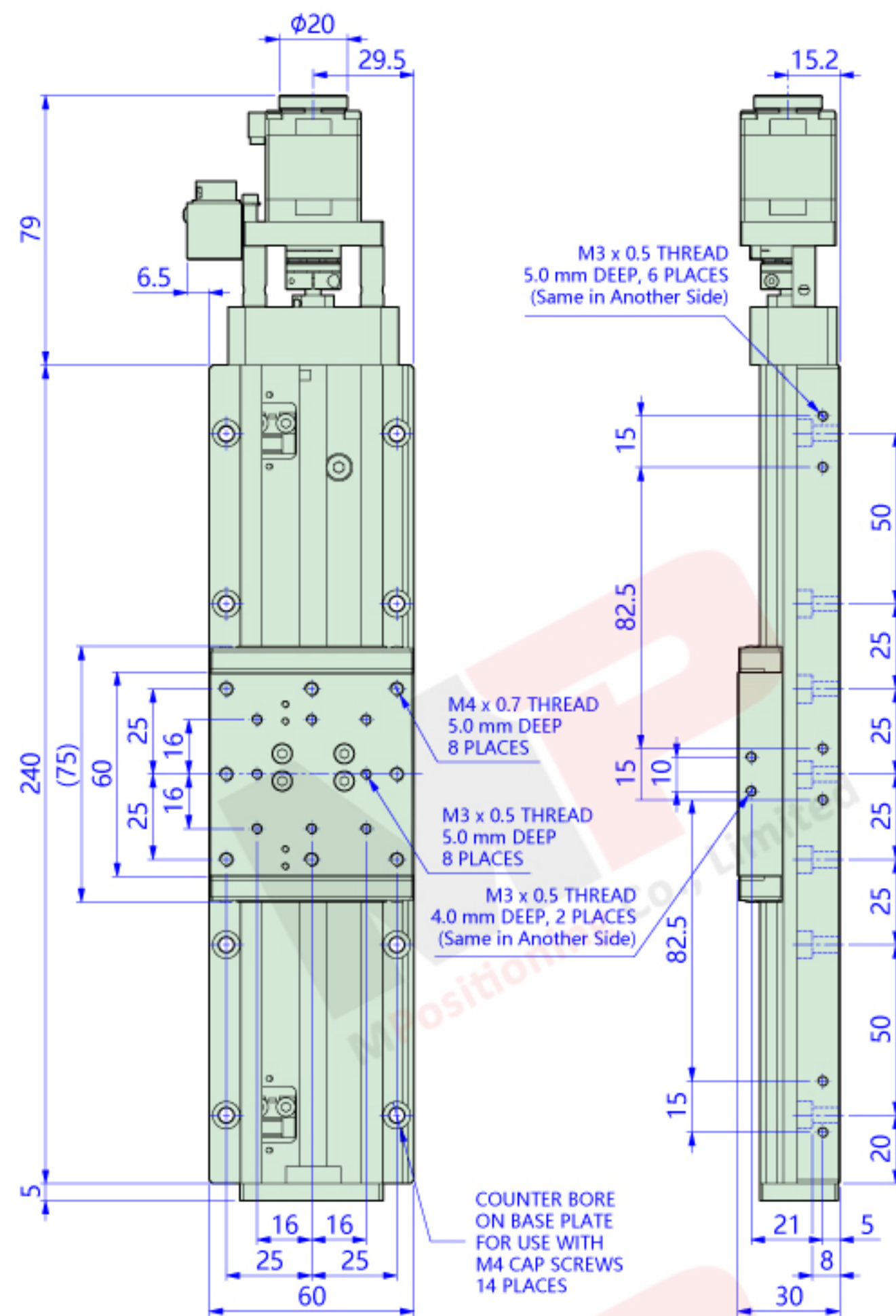


Item Number	Platform Size (mm)	Moving Direction	Stroke (mm)	Weight (kg)	Max. Load Capacity	Max. Velocity	Unidirectional Repeatability	Bidirectional Repeatability	Backlash	Flatness	Straightness
UP60X-30N1	60 x 60	X	30	1.20	14 kgf	20 mm/sec	≤ 15 µm	± 1 µm	≤ 3 µm	≤ 20 µm	≤ 3 µm
UP60X-50N1			50	1.30							
UP60X-75N1			75	1.40							

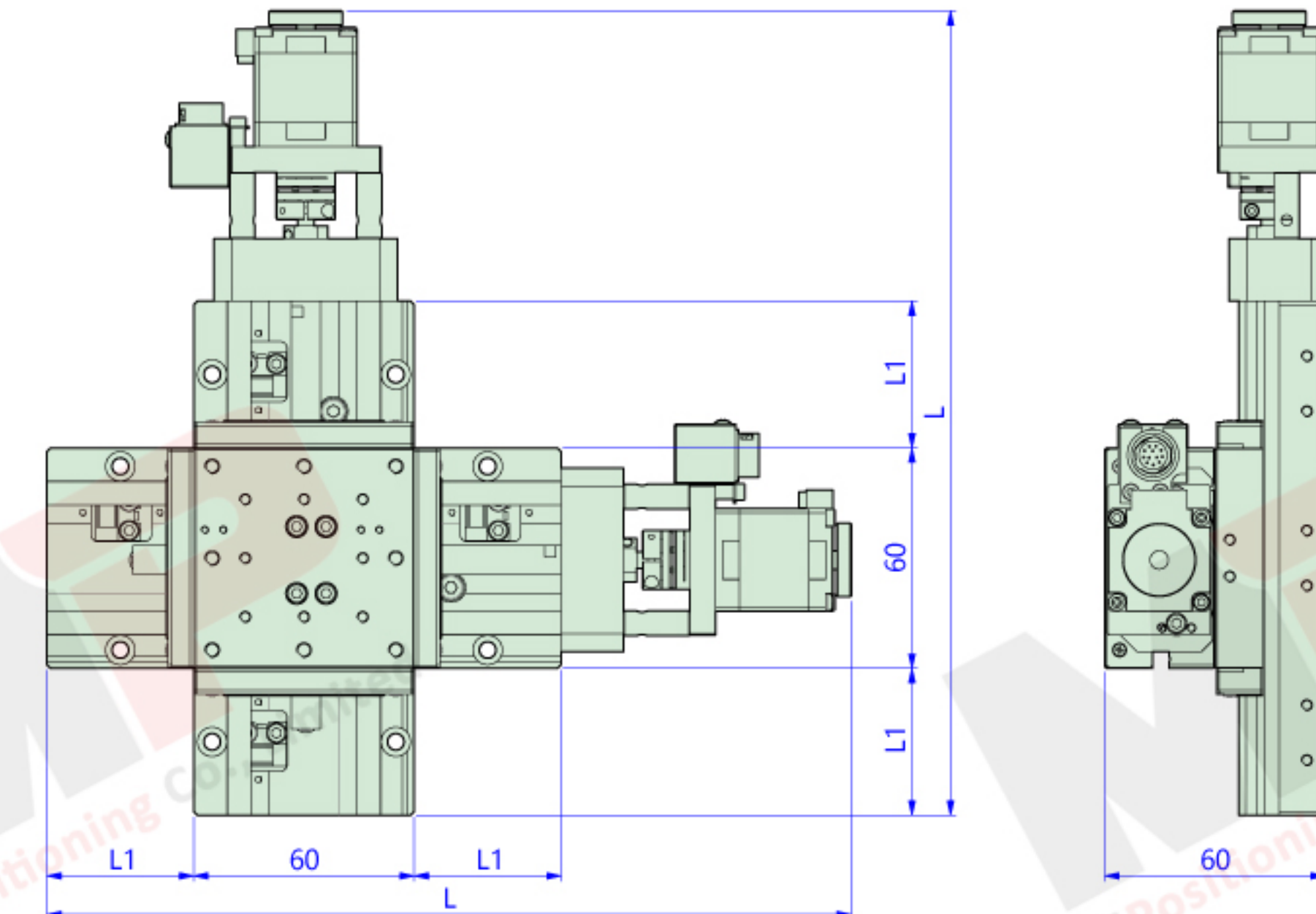
UP60X-100N1, UP60X-100N2



UP60X-150N1, UP60X-150N2



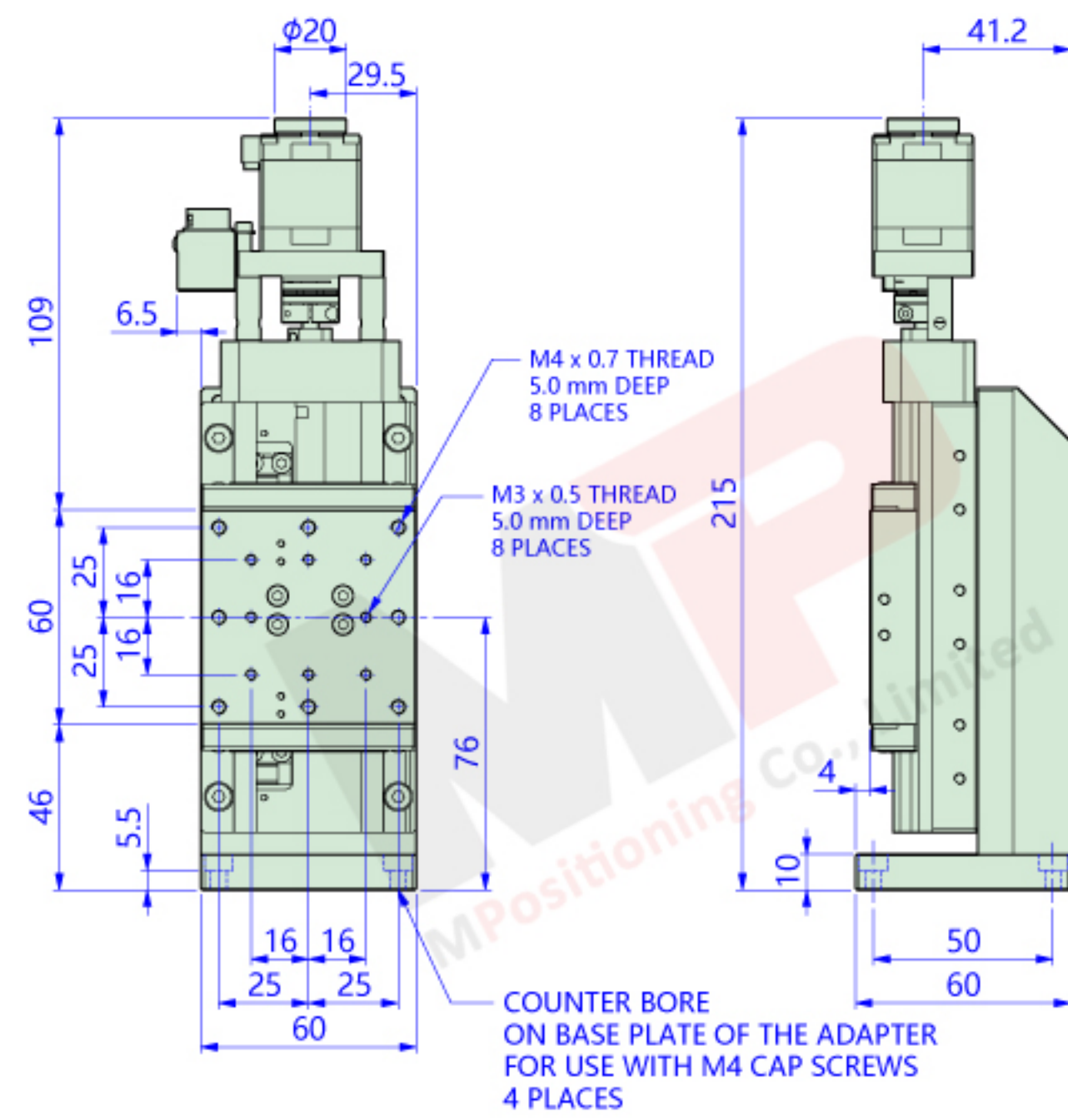
Item Number	Platform Size (mm)	Moving Direction	Stroke (mm)	Weight (kg)	Max. Load Capacity	Max. Velocity (mm/sec)	Unidirectional Repeatability	Bidirectional Repeatability	Backlash	Flatness	Straightness
UP60X-100N1	60 x 60	X	100	1.55	14 kgf	20	≤ 15 μm	± 1 μm	≤ 3 μm	≤ 20 μm	≤ 3 μm
UP60X-100N2						40					
UP60X-150N1	60 x 60	X	150	1.78	14 kgf	20	≤ 15 μm	± 1 μm	≤ 3 μm	≤ 20 μm	≤ 3 μm
UP60X-150N2						40					



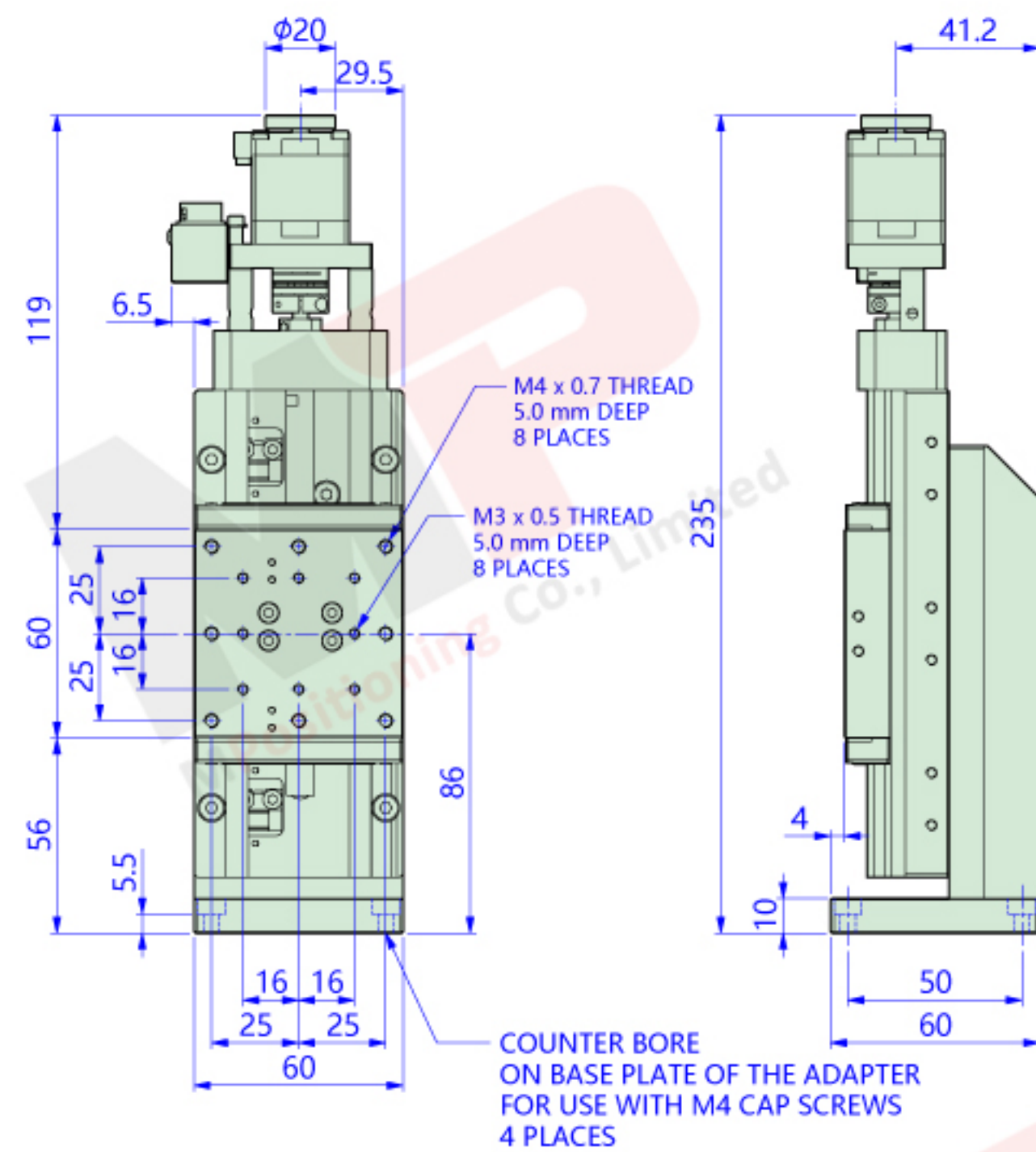
*The mounting holes on top table and base plate are the same as the related single x-axis stage.

Item Number	Platform Size (mm)	Moving Direction	Stroke (mm)	Weight (kg)	Max. Load Capacity	Max. Velocity (mm/sec)	Unidirectional Repeatability	Bidirectional Repeatability	Backlash	Straightness	L	L1
UP60XY-30N1	60 x 60	XY	30	2.40	14 kgf	20	≤ 15 μm	± 1 μm	≤ 3 μm	≤ 3 μm	199	30
UP60XY-50N1			50	2.60		20					219	40
UP60XY-75N1			75	2.80		20					244	52.5
UP60XY-100N1			100	3.10		20					269	65
UP60XY-100N2			100	3.10		40					269	65
UP60XY-150N1			150	3.56		20					319	90
UP60XY-150N2	150	3.56	40	319	90							

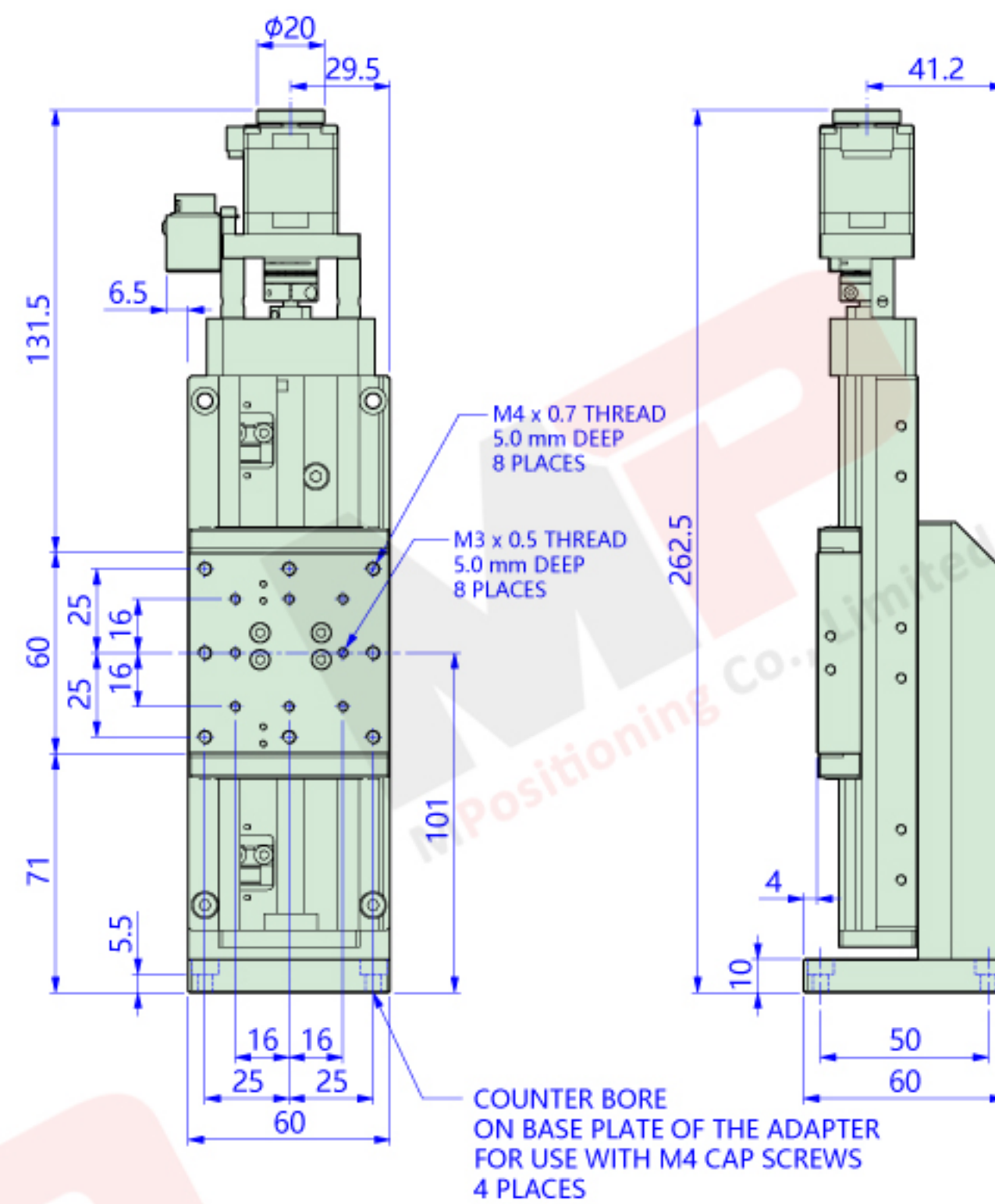
UP60Z-30N1



UP60Z-50N1



UP60Z-75N1



Item Number	Platform Size (mm)	Moving Direction	Stroke (mm)	Weight (kg)	Max. Load Capacity	Max. Velocity	Unidirectional Repeatability	Bidirectional Repeatability	Backlash	Flatness	Straightness
UP60Z-30N1	60 x 60	X	30	1.65	7 kgf	20 mm/sec	≤ 15 μm	± 1 μm	≤ 3 μm	≤ 20 μm	≤ 3 μm
UP60Z-50N1			50	1.75							
UP60Z-75N1			75	1.85							

